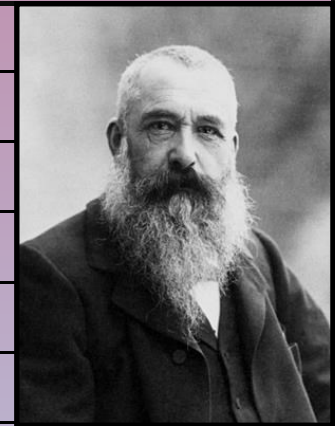


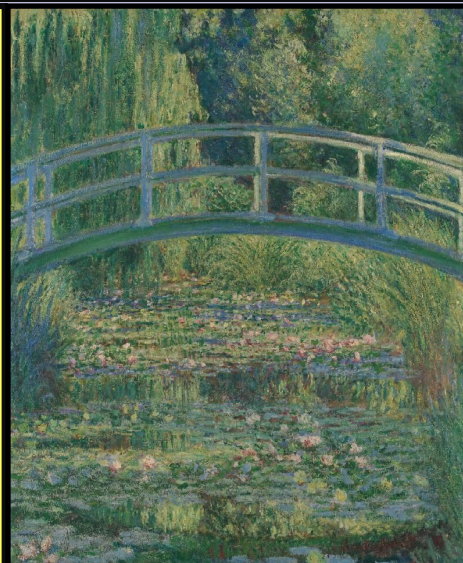
# Year 3, Summer 2: Show Me The Monet!

Vocabulary	Definition
watercolour	A painting method involving mixing paint with water.
brushstroke	A mark made by a paint brush drawn across a surface.
gallery	A building where art works are displayed.
perspective	Representing height and distance on a 2D art work / the viewer's view of an artwork.
Two-dimensional	(2D) A flat surface such as paper or canvas
process	The way or method an art work is created.
Impressionism	A style of art that began in France in the 1860s. It captures feelings rather than being realistic.
Canvas	A type of surface to be painted on. Often used with an easel.



**Oscar-Claude Monet (1840–1926)** was a French painter, who was one of the first to use the French **Impressionist** painting style. He was considered to be the most consistent impressionist painter and loved to paint **natural landscapes**. In fact, he once said *“The richness I achieve comes from Nature, the source of my inspiration.”*

Claude (as he was known) painted dozens of famous pieces of work, but his most famous series is undoubtedly **“Waterlilies”**, a collection of more than 250 pieces that explores the beauty and complexity of the flowers.



We are studying

**Claude Monet**  
(impressionism—1860s)

We have already studied...

**Jackson Pollock**  
(abstract expressionism—1940s)

**Andy Warhol**  
(Pop Art—1950s)

